

# SOLAR PHOTOVOLTAIC MOUNTING STRUCTURES



- ROOFTOP STRUCTURE - AL - LANDSCAPE (SINGLE ROW)
- ROOFTOP STRUCTURE - AL - LANDSCAPE (DOUBLE ROW)
- ROOFTOP STRUCTURE - GI - LANDSCAPE
- ROOFTOP STRUCTURE - GI - PORTRAIT
- METAL ROOFS - STANDING SEAM
- METAL ROOFS - TRAPEZOIDAL PROFILE
- MOUNTING STRUCTURE FOR TILED ROOFS
- GROUND MOUNTED STRUCTURE - GI - LANDSCAPE
- GROUND MOUNTED STRUCTURE - FIXIED
- POLE MOUNTED STRUCTURE





# SOLAR PV MOUNTING STRUCTURES

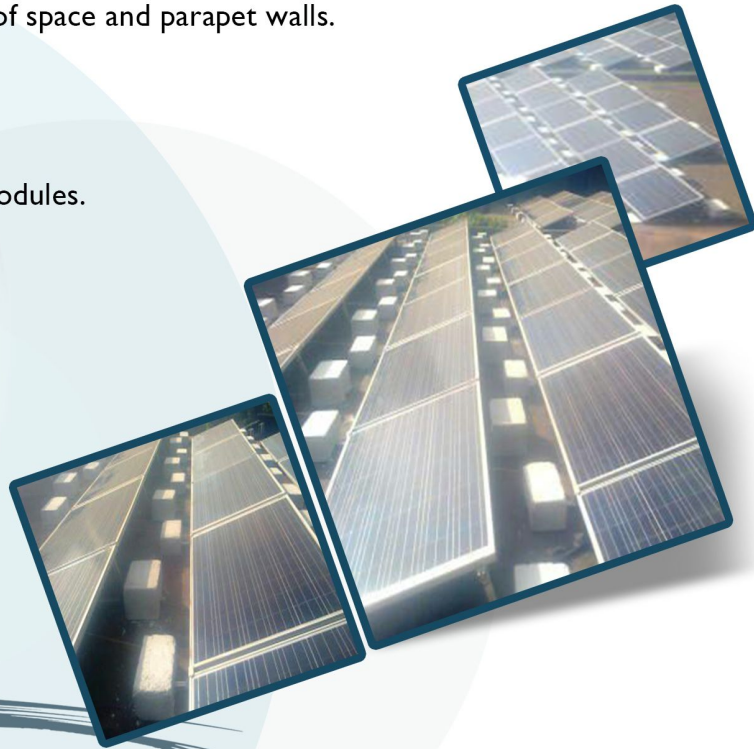


## ROOFTOP STRUCTURE- AL-LANDSCAPE (SINGLE ROW)

### MODEL: STR - AL - 1000

Non penetrating rooftop solution suitable for small kW systems (250W-2KW) on flat roof top with plenty of roof space and parapet walls.

- Scale from as small as one PV module to multiple PV modules.
- Easy to assemble, disassemble, and transport.
- No power tools required for assembly.
- Lightweight, all rails made out of aluminium.
- Area required per kW: 9.5 sq.m.
- Tilt angle: Upto 13 degree.



### MODEL: STR - AL - 2000

Rooftop solution suitable for 1KW-100KW system on flat roof tops with plenty of roof space and parapet walls.

## ROOFTOP STRUCTURE - AL - LANDSCAPE (DOUBLE ROW)

- Scale from as small as one PV module to multiple PV modules.
- Easy to assemble, disassemble, and transport.
- No power tools required for assembly.
- Lightweight, all rails made out of aluminium.
- Area required per kW: 9.5 sq.m.
- Tilt angle: Upto 25 degree.
- Can be used as non penetrating solution.





# SOLAR PV MOUNTING STRUCTURES



## ROOFTOP STRUCTURE - GI-LANDSCAPE

### MODEL: STR - GI - 2000

Low cost compact structure suitable for flat roof and small to mid sized installations (1KW-100KW).

- Structure is made of roll formed GI profiles (C channels and angles), 120GSM standard, 550GSM on request Between 30-40kg per KW, based on latitude.
- GI fasteners, GI stud bolts for foundations.
- No welding required.
- Tailored to meet roof area and system size.
- Designed to withstand wind gusts of 130kph.



### MODEL: STR - GI - 3000

This structure suitable for flat roof and small to large sized installations (1KW-100KW).

## ROOFTOP STRUCTURE - GI - PORTRAIT

- Structure is made of Square / Rectangular Tubes and Aluminium Purlins.
- Between 35-45kg per KW, based on latitude.
- SS fasteners for connecting the module.
- Tailored to meet roof area and system size.
- No welding required.
- Designed to withstand wind gusts of 150kph.



# SOLAR PV MOUNTING STRUCTURES



## METAL ROOF - STANDING SEAM

### MODEL: STR - AL - 3600

Suitable metal roof with standing seam – panels mount directly to clamps, roof is not penetrated.

Mounting structure components include:

- AL Standing seam clamps
- Al mid and end clamps

Brackets are riveted to metal sheet using pop rivets.



### MODEL: STR - AL - 3000

This structure suitable for corrugated metal roof with trapezoidal roof profile – solar panels arranged in portrait mode.

## METAL ROOF – TRAPEZOIDAL PROFILE

Mounting structure components include:

- T slotted rails
- End and mid clamps
- Angle brackets
- T Nuts and bolts

Above components are made out of anodized Al Rails riveted to metal roof with pop rivets





# SOLAR PV MOUNTING STRUCTURES



## MOUNTING STRUCTURE FOR TILED ROOF

### MODEL: STR - AL - 4000

Suitable for tiled roof – panels mount directly to rails that are fastened to hooks fixed to underlying rafters.

Mounting structure components include:

- GI / HDG Legs
- Al mounting rails
- Al end and mid clamps



### MODEL: STR - GI - 2500

Low cost compact structure suitable for ground and small to mid sized installations (1KW-100KW).

## GROUND MOUNTED STRUCTURE - GI - LANDSCAPE

- Ground mount solutions suitable for small KW solar PV systems (1KW - 10KW).
- Structure is made of roll formed GI profiles (C channels and angles), 120GSM standard, 550GSM on request.
- Between 30-40kg per KW, based on latitude.
- GI fasteners, GI stud bolts for foundations.
- No welding required.
- Designed to withstand wind gusts of 130kph.



# SOLAR PV MOUNTING STRUCTURES



## MODEL: STR - HDG - 5000

### GROUND MOUNTED STRUCTURE - FIXED

Suitable for large MW solar installations.



Simple structure designed to hold 1-2 solar panels above ground or roof.

### POLE MOUNTED STRUCTURE





# SOLAR PV MOUNTING STRUCTURES





# NORDIC ASIA

## USA

Nordic Asia Solutions  
3040 78th Ave SE, Unit 1619  
Mercer Island, WA 98040.  
Tel: 719 418 0765  
Mobile: 720 492 2885

## SINGAPORE

Nordic Asia Solutions Pte Ltd.,  
77A Boat Quay,  
Singapore 049865  
Phone: Tel: +6531591828  
info@nordicasia.net  
<http://www.nordicasia.net>



## INDIA

Nordic (India) Solutions Pvt Ltd  
Survey No.223/2A, Union Road  
Irandam Kattalai, Kovur (Post)  
Chennai - 600 128  
Phone : 95000 22164/94  
<http://www.nordicindia.com>